

**Contact: Laura Bessinger-Morse**  
**Director of Marketing and Development**  
**(561) 746-3101**  
**Email: [laura@lighthousearts.org](mailto:laura@lighthousearts.org)**  
**For Immediate Release**



**Photos Attached**

**IF YOU GO:**

**John Soderberg**, World-renowned bronze sculptor and Freedom Award sculptor  
**Event:** A Special Collectors' Evening with the Artist  
**Date:** Wednesday, March 24, 2010      **Time:** 5:30 to 7:30 p.m.  
**Location:** Gallery Square North, 373 Tequesta Drive, Tequesta  
**(A closing reception will also be held on Friday, March 26, from 5:30 to 7:30 p.m.)**  
**R.S.V.P. and information:** (561) 746-3101 or [www.LighthouseArts.org](http://www.LighthouseArts.org)  
***Human Drama in Bronze* Exhibit:** Ends March 27, 2010  
**Photos Attached**

**Collectors of Sculpture are Invited to an Evening with World-Renowned  
John Soderberg at the Lighthouse Center for the Arts**

**Tequesta, Fla. — (March 12, 2010)** – Collectors of contemporary sculpture will get a unique opportunity to enjoy a special evening on Wednesday, March 24, from 5:30 to 7:30 p.m. in the Lighthouse Center for the Arts museum. Works in the *Human Drama in Bronze, a Sculptural Retrospective by the John Soderberg Family*, will be personally described by the artist, who will be on hand to share his passion of the human themes depicted in the many pieces on display. In an intimate setting, enjoy the beauty of these incredible works while considering an acquisition for personal or public collections.

The evening presents a rare opportunity to hear from the internationally-acclaimed artist himself, and will be the ultimate experience for those who are interested in adding to their fine art collections by purchasing one of the Soderberg sculptures on exhibition or by commissioning a new work. Soderberg has created numerous monumental bronze commissions across the country, teaches at art academies, and nurtures and mentors other sculptors. He has invented tools, materials and techniques which have bettered the world of art. Soderberg lives and works on a small homestead ranch in Arizona. Soderberg's appearance for a special collectors' evening is in conjunction with a three-day workshop that he will be teaching on how to sculpt a head and shoulders, beginning March 25 at Lighthouse Center for the Arts. A closing reception will be held on Friday, March 26, from 5:30 to 7:30 p.m. The Soderberg exhibition is sponsored and represented by Denise LeClair-Robbins.

For more information on the Lighthouse Center for the Arts Museum, School of Art, exhibitions, programs and events visit [LighthouseArts.org](http://LighthouseArts.org) or call (561) 746-3101. The Lighthouse Center for the Arts is located in Gallery Square North, 373 Tequesta Drive, Tequesta, FL, one-half mile west of US Hwy 1. Museum hours are Monday through Saturday 10 a.m. to 4:30 p.m. and Sunday is Family Day, with free admission, hours 10 a.m. to 2 p.m.

## Page Two – Soderberg Collectors' Evening

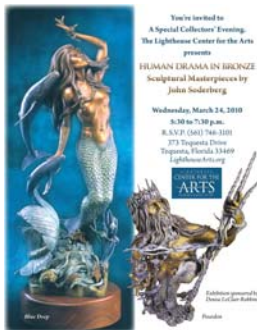
### ABOUT THE LIGHTHOUSE CENTER FOR THE ARTS

The Lighthouse Center for the Arts (LCA) is a member-supported not for profit 501(c)(3) community arts organization, providing excellence in art exhibitions, instruction, education and outreach for all ages. Programs are funded in part by the Palm Beach County Cultural Council, the Palm Beach County Tourist Development Council and the Palm Beach County Board of County Commissioners.

# # #

### Photos Attached

Cutline:



### LCA-Soderberg collector invite

Invitation to a Special Collectors' Evening with John Soderberg at the Lighthouse Center for the Arts.



### LCA-John and Merlin

Internationally acclaimed bronze sculptor next to *Merlin*, his 10 foot tall masterpiece, available for acquisition at Lighthouse Center for the Arts. (Photo by Katie Deits)



**LCA-John-Blue Deep**

John Soderberg with the fantastic mermaid sculpture, *Blue Deep*, on exhibition and available for private collection at the Lighthouse Center for the Arts. (Photo by Katie Deits)