

**Contact: Laura Bessinger-Morse**  
**Director of Marketing and Development**  
**(561) 746-3101**  
**Email: [laura@lighthousearts.org](mailto:laura@lighthousearts.org)**  
**For Immediate Release**



**Photos Attached**

**IF YOU GO:**

***Lighthouse Center for the Arts 2010 Member/Student Exhibition and Art Sale***

**Exhibit:** April 2 — 27, 2010

**Opening Reception:** April 8, 2010 **Time:** 5:30 to 7:30 p.m.

**Location:** Gallery Square North, 373 Tequesta Drive, Tequesta

**Information and directions:** (561) 746-3101 or [LighthouseArts.org](http://LighthouseArts.org)

**Museum Hours:** Monday – Saturday 10 a.m. to 4 p.m.

**Cost:** Members free; Non-members \$5

**Lighthouse Center for the Arts 2010 Member/Student Exhibition  
and Art Sale Features Community's Most Talented Artists**

**Tequesta, Fla (April 1, 2010)** — Current members and students of the Lighthouse Center for the Arts (LCA) will display their recent original artwork in the center's Annual Member/Student Exhibition and Art Sale. The exhibition will run from April 2 through April 27, 2010, with an opening reception on Thursday, April 8, from 5:30 to 7:30 p.m. The event and exhibition is free to members of the Lighthouse Center for the Arts and \$5 for non-members. The annual spring exhibition is one of LCA's most popular, and draws over one thousand arts enthusiasts.

The exhibition includes first-rate art of all media from drawing, painting and photography to ceramics, sculpture and fiber art. "This is such a special exhibition because it showcases the artists in our community," said Shannon Frezza, Curator. "It really makes you realize how many talented and artistic people we have right in our own backyard. It's also a great opportunity for art collectors to purchase work by up-and-coming artists for a great price, all while helping to support our unique organization."

The exhibition also benefits those considering an art class, as it gives viewers a chance to see the techniques LCA students learn in various courses. Almost every exhibiting artist attends the opening reception, making themselves available for questions and conversations from guests about their artwork. "It's exciting to see our community alive with such talent," said Director of Marketing and Development Laura Bessinger-Morse. "Some students begin a whole new life and career once they come to the arts – and it can happen at any age, at any time of life." An important part of the Lighthouse Center for the Arts' mission is to provide access to quality programs and facilities where new and established artists can create and express through the visual arts.

## Page Two - LCA Member/Student Show

For more information on the Lighthouse Center for the Arts Museum, School of Art, exhibitions, programs and events visit [LighthouseArts.org](http://LighthouseArts.org) or call (561) 746-3101. The Lighthouse Center for the Arts is located in Gallery Square North, 373 Tequesta Drive, Tequesta, FL, one-half mile west of US Hwy 1. Museum hours are Monday through Saturday 10 a.m. to 4 p.m.

### ABOUT THE LIGHTHOUSE CENTER FOR THE ARTS

The Lighthouse Center for the Arts (LCA) is a member-supported not-for-profit 501(c)(3) community arts organization, providing excellence in art exhibitions, instruction, education and outreach for all ages. Programs are funded in part by the Palm Beach County Cultural Council, the Palm Beach County Tourist Development Council and the Palm Beach County Board of County Commissioners.

# # #

### Photos Attached

Cutlines:



**LCAFrezza**– Carol Frezza's *Luminous Coconuts*, acrylic and paper on canvas, in the 2010 Member/Student Exhibition and Art Sale at Lighthouse Center for the Arts, April 2 through 27.



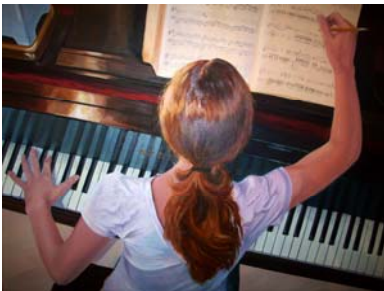
**LCAPalumbo**– Liz Palumbo's *Lui*, terra cotta sculpture, in the 2010 Member/Student Exhibition and Art Sale at Lighthouse Center for the Arts, April 2 through 27.



**LCAPierre**— Joseph Pierre's *Tears of Haiti*, oil on canvas, in the 2010 Member/Student Exhibition and Art Sale at Lighthouse Center for the Arts, April 2 through 27.



**LCABackhamre**— Katarina Backhamre's *Waterfall*, oil on canvas, in the 2010 Member/Student Exhibition and Art Sale at Lighthouse Center for the Arts, April 2 through 27.



**LCAMotta**— Nina Motta's *Piano Practice*, oil on canvas, in the 2010 Member/Student Exhibition and Art Sale at Lighthouse Center for the Arts, April 2 through 27.



**LCARoth**— Peter Roth's *Cuillo at Twilight*, oil and acrylic on canvas, in the 2010 Member/Student Exhibition and Art Sale at Lighthouse Center for the Arts, April 2 through 27.