

Contact: Laura Bessinger-Morse
Director of Marketing and Development
(561) 746-3101
Email: laura@lighthousearts.org
For Immediate Release



Photos Attached

IF YOU GO:

Lighthouse Center for the Arts Jacklyn Laflamme: The Fairytale Project

June 10 — July 24, 2010

Location: Gallery Square North, 373 Tequesta Drive, Tequesta

Information and directions: (561) 746-3101 or LighthouseArts.org

Museum Hours: Monday – Saturday 10 a.m. to 4 p.m.

Cost: Members free; \$5 non-members ages 12 and above

Lighthouse Center for the Arts Opens *The Fairytale Project*
An Exhibition Featuring the Art of Illustrator Jacklyn Laflamme

Tequesta, Fla. (May 12, 2010) — Beginning June 10, visitors to the Lighthouse Center for the Arts Museum can journey into an enchanted forest full of magical trees, whimsical creatures and fanciful paintings. A new exhibition features children's book illustrator Jacklyn Laflamme's original artwork from the delightful children's books, *Will and the Magical Forest*, *Will and the River of Enchantment* and *Will and the Crystal Fairy*, written by Dani Lynn. The storybooks are based on the tale of an old man who takes a journey with his grandson through a magical forest and becomes a young boy again, learning to embrace his inner child.

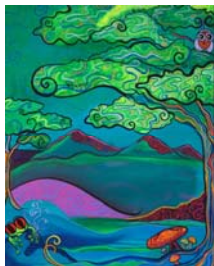
Accompanying each painting will be storybook text viewers can read as they wander through the magical land. Book one, *Will and the Magical Forest*, will first be exhibited as a sneak preview at the Lighthouse Center for the Arts School of Art on Seabrook Road in Tequesta through June 5. It will then join book two, *Will and the River of Enchantment* at the Lighthouse Center for the Arts Museum on June 10. Also exhibited in the Museum will be the new third book, *Will and the Crystal Fairy*, in its first unveiling. Fans of the storybooks can meet the author and illustrator on Thursday, June 17, from 5:30 – 7:30 p.m. at the exhibition opening reception in the Museum. The three books will be for sale in the Museum Store, as well as other *Fairytale Project* merchandise. Jacklyn Laflamme and Dani Lynn will be available for autographs. Also scheduled is a children's enchanted reading adventure on Saturday, June 19, from 12:30 to 2 p.m. in the Museum, as children and parents are guided through the magical forest and taken on an imaginary storybook adventure. Both events are free for members of the Lighthouse Center for the Arts and \$5 for non-members ages 12 and above.

For more information on the Lighthouse Center for the Arts Museum, School of Art, exhibitions, programs and events visit LighthouseArts.org or call (561) 746-3101. The Lighthouse Center for the Arts is located in Gallery Square North, 373 Tequesta Drive, Tequesta, FL, one-half mile west of US Hwy 1. Museum hours are Monday through Saturday 10 a.m. to 4 p.m. **ABOUT THE LIGHTHOUSE CENTER FOR THE ARTS** The Lighthouse Center for the Arts is a member-supported not-for-profit 501(c)(3) community arts organization, providing excellence in art exhibitions, instruction, education and outreach for all ages. Programs are funded in part by the Palm Beach County Cultural Council, the Palm Beach County Tourist Development Council and the Palm Beach County Board of County Commissioners.

#

Photos Attached

Cutlines:



LCA-The Magical Forest.jpg – *The Magical Forest* by Jacklyn Laflamme, an illustration from *Will and the Magical Forest*, featured in *The Fairytale Project* exhibition at Lighthouse Center for the Arts, June 10 through July 24. (Photo by Jacklyn Laflamme)



LCA-River of Enchantment.jpg – *The River of Enchantment* by Jacklyn Laflamme, an illustration from *Will and the Magical Forest*, featured in *The Fairytale Project* exhibition at Lighthouse Center for the Arts, June 10 through July 24. (Photo by Jacklyn Laflamme)



LCA-Fork in the Road.jpg – *Fork in the Road* by Jacklyn Laflamme, an illustration from *Will and the Magical Forest*, featured in *The Fairytale Project* exhibition at Lighthouse Center for the Arts, June 10 through July 24. (Photo by Jacklyn Laflamme)



LCA-Namura.jpg – *Namura* by Jacklyn Laflamme, an illustration from *Will and the Magical Forest*, featured in *The Fairytale Project* exhibition at Lighthouse Center for the Arts, June 10 through July 24. (Photo by Jacklyn Laflamme)