

## Board of Directors 2009-2010

President	Colette Meyer, Esq.
Vice President	Mason Walsh
Treasurer	Bruce G. Heard
Secretary	Susan S. Bardin
Immediate Past President and President's Council Chair	Susan Namm Spencer
Board Members	David Click, Esq. René Friedman Audrey Harris, Esq. Donaldson E. Hearing Barbara Kirsch Elizabeth Neuhoff Dr. Anne Palumbo Ruth Petzold Rosalie Roush Susan Namm Spencer
Executive Director	Katie Deits
Director of Marketing and Development	Laura Bessinger-Morse

### Now Registering for Art Classes

Online registration at [www.LighthouseArts.org](http://www.LighthouseArts.org)  
or contact The School of Art

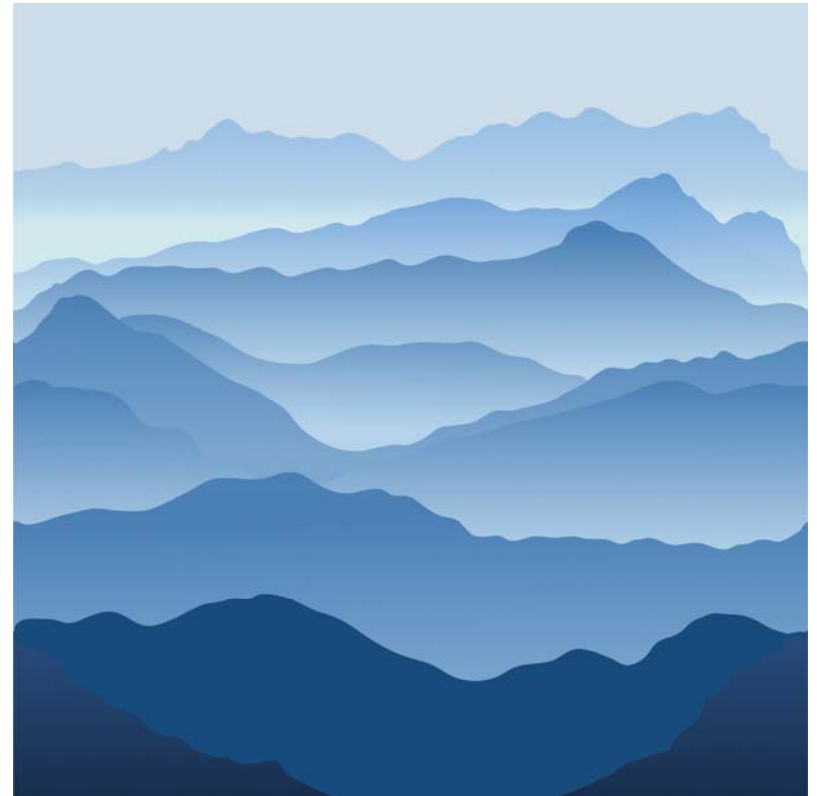
Museum: 373 Tequesta Drive, Tequesta, FL 33469 (561) 746-3101

School: 395 Seabrook Road, Tequesta, FL 33469 (561) 748-8737



# LANDSCAPES

## *Painters of Scenery*



## CALL TO ARTISTS



### Landscapes: Painters of Scenery Exhibition Theme

The vision for this exhibition is to fill a portion of the Museum with landscape paintings of all styles by Florida artists, featuring outdoor scenes from any where in the world.

The Lighthouse ArtCenter is seeking artists from all over Florida to submit images of recent works for **Landscapes: Painters of Scenery**, running **September 30, 2010, to November 2, 2010**. This is a juried exhibition, and artwork will be selected by Clay K. and John H. Surovek of the John H. Surovek Gallery in Palm Beach. The Surovek Gallery specializes in the finest examples of 19<sup>th</sup> and 20<sup>th</sup> century American paintings, watercolors, drawings and prints. They have more than thirty-five years of acquiring, representing and placing extraordinary works of art in the finest private and public collections. Artwork chosen for this exhibition will be landscape-themed paintings of all media and styles, from realism to abstract. Jurors will also choose artwork based on a wide variety of landscape locations to add interest to the exhibition.



Clay K. Surovek

### Conditions

- Entrants should complete the attached form and submit it to the Lighthouse ArtCenter with a CD containing a JPEG image (less than one megabyte per image) for each piece of artwork to be considered for entry in the exhibition and mail or drop off to 373 Tequesta Drive, Tequesta, Florida 33469. **The deadline for submission is Tuesday, September 7, 2010, by 4 p.m.** The selected artists will be notified during the week of September 13, 2010.
- There is a non-refundable fee of \$35 for up to three entries.**
- Selected artwork must be delivered to the ArtCenter on Monday, September 27, 2010, between 10 a.m. and 6 p.m.**, and two-dimensional work must be framed or edge-finished with a wire, ready to hang.
- Exhibiting artists are expected to pick up their artwork from the ArtCenter on Wednesday, November 3, 2010, between 10 a.m. and 6 p.m.**

**\*Please note:** A 30% commission will be taken by the Lighthouse ArtCenter on all artworks sold during the exhibition. ALL works MUST remain on display through the duration of the exhibition.

### Important Dates

- Exhibition runs September 30, 2010, to Nov. 2, 2010
- Submission deadline is Tuesday, Sept. 7, 2010, by 4 p.m.
- Notification of acceptance the week of Sept. 13, 2010
- Artwork delivery to ArtCenter Monday, Sept. 27, 2010, from 10 a.m. to 6 p.m.
- Opening reception on Thursday, Oct. 7, from 5:30 - 7:30 p.m.

We are not responsible for entry materials lost in the mail, entry materials damaged in transportation, or malfunctions in entry materials due to human or technological error by the entrant or by ArtCenter staff. All entry materials will become the property of Lighthouse ArtCenter once submitted and will not be returned to the entrant. We reserve the right to dispose of materials once the exhibition participants have been selected. Entry materials of the artists selected for exhibition may be used by the ArtCenter for marketing, press, announcements, etc.

We are not responsible for loss or damage to the accepted artwork during the course of the exhibition. Lighthouse ArtCenter will charge a storage fee of \$5 per day on any works not picked up on the required date without previous arrangements. After 30 days, the artwork will become property of Lighthouse ArtCenter and may be discarded or donated.

### Landscapes: Painters of Scenery Entry Form

#### Artist Information

(Please print legibly)

Full Name \_\_\_\_\_

Address \_\_\_\_\_

City \_\_\_\_\_ State \_\_\_\_\_ Zip Code \_\_\_\_\_

Phone \_\_\_\_\_ Fax \_\_\_\_\_

Email Address \_\_\_\_\_ Website \_\_\_\_\_

**Artwork Information:** # of pieces entered \_\_\_\_\_

Title of piece #1 \_\_\_\_\_

Medium \_\_\_\_\_

Dimensions H: \_\_\_\_\_ W: \_\_\_\_\_ Retail Price\* \_\_\_\_\_

Title of piece #2 \_\_\_\_\_

Medium \_\_\_\_\_

Dimensions H: \_\_\_\_\_ W: \_\_\_\_\_ Retail Price\* \_\_\_\_\_

Title of piece #3 \_\_\_\_\_

Medium \_\_\_\_\_

Dimensions H: \_\_\_\_\_ W: \_\_\_\_\_ Retail Price\* \_\_\_\_\_

By signing below, I agree to all terms and conditions for consideration in the Lighthouse ArtCenter's *Landscapes: Painters of Scenery* exhibition.

\* Lighthouse ArtCenter receives a 30% commission on all exhibition sales. Artists receive a check for 70% of the sale price at the conclusion of the exhibition.

**X** \_\_\_\_\_ **Date:** \_\_\_\_\_

For questions or additional information, call (561) 746-3101 or visit [www.LighthouseArts.org](http://www.LighthouseArts.org).