



**Contact: Sarah Block**  
**(561) 746-3101**  
**Email: [sarah@lighthousearts.org](mailto:sarah@lighthousearts.org)**  
**For Immediate Release**  
**Photos Attached**

**IF YOU GO:**

**Contempo Exhibition:** January 6 to February 10, 2011, Opening Reception: January 13

**Location:** Lighthouse ArtCenter, Gallery Square North, 373 Tequesta Drive, Tequesta

**Museum Hours:** Monday through Friday 10 a.m. to 4 p.m., Saturday 10 a.m. to 2 p.m.

**Cost to view exhibition:** Members free; \$5 non-members ages 12 and up; Saturday, free admission

**Information:** (561) 746-3101

### **Lighthouse ArtCenter goes *Contempo***

Tequesta, Fla. — (January 6, 2011) – An exhibition known for *pushing the limit on art* ushers in this exciting new year at the Lighthouse ArtCenter. The 2<sup>nd</sup> Annual *Contempo* exhibition, which runs from January 6 to February 10, features cutting-edge paintings, drawings, sculpture, photography and ceramics created within the past two years. The exhibition is judged by J. Marshall Adams, Director of Education at the Vero Beach Museum of Art.

Lighthouse ArtCenter Executive Director Katie Deits describes *Contempo* as “a window into the modern-day artistic interests of a very talented group of artists.”

“I think visitors will be dazzled,” Deits says of the exhibition, which features 130 edgy art pieces, including the portrait of a six-foot tall ferocious black bear created on mixed media, a funky photo sequence on an 80-inch tall canvas of a woman using a hula hoop and an oversized, whimsical ceramic and wood chess set.

The exhibition is featured alongside another of the season’s most popular art attractions, *ArtyBras*, an exhibition of artist-created bras, as well as a silent auction and fashion show on February 10 to benefit the Ella Milbank Foshay Cancer Center at the Jupiter Medical Center and the programs of the Lighthouse ArtCenter.

An opening reception and awards ceremony for *Contempo* and kick-off to *ArtyBras* will take place January 13, 2011, from 5:30 to 7:30 p.m. The Lighthouse ArtCenter invites guests to celebrate the openings of these highly-anticipated

exhibitions over wine and hors d'oeuvres. Admission is free to members and \$5 to non-members.

In addition, the Lighthouse ArtCenter will host its monthly Third Thursday event on January 20, from 5:30 to 7:30 p.m., featuring an in-depth look into contemporary art. Third Thursday is free to members and \$5 to non-members.

The following month, a final send-off will take place for *ArtyBras* in the form of an auction and fashion show at the Lighthouse ArtCenter, upon the closing of both exhibitions. The event is February 10 and includes a pre-show reception with wine and hors d'oeuvres at 5:30, and fashion show and auction from 6:30 to 8:00 p.m. Admission is \$5 to members and \$10 to non-members.

The Lighthouse ArtCenter is a member-supported not-for-profit 501(c)(3) community arts organization, providing excellence in art exhibitions, instruction, education and outreach for all ages. Programs are funded in part by the Palm Beach County Cultural Council, the Palm Beach County Tourist Development Council and the Palm Beach County Board of County Commissioners.

For more information on the Lighthouse ArtCenter Museum, School of Art, exhibitions, programs and events, visit [LighthouseArts.org](http://LighthouseArts.org) or call (561) 746-3101. The Lighthouse ArtCenter is located in Gallery Square North, 373 Tequesta Drive, Tequesta, Fla., one-half mile west of US Hwy 1. Museum hours are Monday through Friday 10 a.m. to 4 p.m. with admission free for members and \$5 for non-members ages 12 and up. Saturday hours are 10 a.m. to 2 p.m., with free admission.

# # #

Photos Attached  
Cutlines:

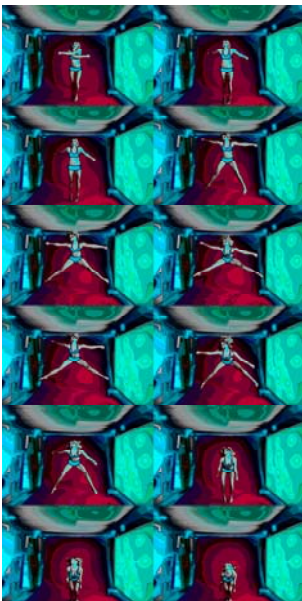


**Gillespie, TD-Bear Mount. 58 x 42 p.jpg**- A roaring black bear is the subject of TD Gillespie's 58" x 42" mixed-media portrait, "Bear Mount"

(\$1200), which is featured in the *Contempo* exhibition at the Lighthouse ArtCenter. The exhibition runs from January 6 through February 10.



**Lublinksi, Diane p- frompawntoking.jpg**- A ceramic chess set, "From Pawn to King" (\$6,800), by Diane Lublinksi is featured in *Contempo* at the Lighthouse ArtCenter. The exhibition runs from January 6 through February 10.



**Arbeznik, L – Cheerleader Collage p.jpg**. An 80" x 40" abstract photograph, "Cheerleader Collage" (\$995), by Leo Arbeznik is featured in *Contempo* at the Lighthouse ArtCenter. The exhibition runs from January 6 through February 10.



**sabo, jeanette- codependence p. jpg**- A charcoal and acrylic drawing, "Co-dependence" (\$1,850), by Jeanette Sabo is featured in *Contempo* at the Lighthouse ArtCenter. The exhibition runs from January 6 through February 10.



**Skillings, Gina- Tea Jar p. jpg-** A ceramic and stoneware sculpture, "Tea Jar" (\$150), by Gina Skillings is featured in *Contempo* at the Lighthouse ArtCenter. The exhibition runs from January 6 through February 10.



**Aurre, Gerri- Inside the Sphinx p. jpg-** A mixed media painting, "Inside the Sphinx" (\$600), by Gerri Aurre is featured in *Contempo* at the Lighthouse ArtCenter. The exhibition runs from January 6 through February 10.