

**Contact: Sheila McDonald-Bell or Barbra Broidy  
(561) 746-3101**

**Email: [Sheila@lighthousearts.org](mailto:Sheila@lighthousearts.org) or [Barbra@lighthousearts.org](mailto:Barbra@lighthousearts.org)  
For Immediate Release  
Photos Attached**

**IF YOU GO:**

**125 Club:** Jan. 7, 6 to 8:30 p.m.

**Location:** The Whitespace Collection, 2805 North Australian Avenue in West Palm Beach

**Cost to attend:** \$125 per person

**RSVP and Information:** (561) 746-3101

**Lighthouse ArtCenter's 125 Club to be held at The Whitespace Collection**

Tequesta, Fla. (Nov. 23, 2011) — Chairs Terri Parker and Pat Crowley invite Contemporary Art lovers, innovative thinkers and party-goers to join them and members of the Lighthouse ArtCenter for an unforgettable evening at The Whitespace Collection. Dr. Marvin and Mrs. Elayne Mordes will host the 125 Club in their home, and guests will be offered an insider's tour of their art-filled residence and personal tours of their international art collection entitled "The Whitespace Collection."

"In addition to seeing a fascinating and stimulating art collection, guests will enjoy delicious hors d'oeuvres, wine and cocktails," says Katie Deits, executive director of the Lighthouse ArtCenter. "There also will be entertainment, and with Pat Crowley around, lots of laughs, too."

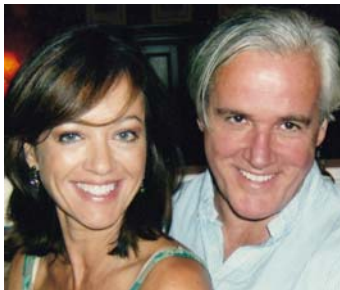
A renowned political cartoonist and illustrator, Pat Crowley teaches cartooning, figure drawing and the art of illustration at the Lighthouse ArtCenter School of Art in Tequesta.

Proceeds of the 125 Club at The Whitespace Collection will help support the Lighthouse ArtCenter's extensive programming at the Museum and School of Art, which provide enrichment in the arts to the local community and its visitors through museum exhibitions, art classes, ArtCamps and events. The ArtCenter also provides youth and elderly with access to the arts through its ArtReach and scholarship programs.

The 125 Club is on Saturday, Jan. 7, 2012, from 6 to 8:30 p.m. Tickets are \$125 per person; space is limited and only 125 tickets will be sold. To purchase, call (561) 746-3101 or visit [LighthouseArts.org](http://LighthouseArts.org).

For more information on the Lighthouse ArtCenter Museum & School of Art, and its exhibitions, programs and events, visit [LighthouseArts.org](http://LighthouseArts.org) or call (561) 746-3101. Lighthouse ArtCenter is in Gallery Square North, 373 Tequesta Drive, Tequesta, Florida, one-half mile west of U.S. Highway 1. Museum hours are Monday through Friday, 10 a.m. to 4 p.m., with admission free for members and \$5 for non-members ages 13 and up. Saturday hours are 10 a.m. to 2 p.m. with free admission. The Lighthouse ArtCenter is a member-supported not-for-profit 501(c)(3) charitable organization, providing excellence in art exhibitions, instruction, education and outreach for all ages.

# # #



Chairs of the 125 Club are Terri Parker and Pat Crowley



Elaine Mordes in the museum area of her residence entitled "The Whitespace Collection."